

Paolo Caneppele – Matteo Lepore

Schlemmer Frames Collection

Method, Identification and Cataloguing Strategies



Acquisition and Original Conditions



- Donation to Miss Edith Schlemmer
- Anonymus collector
- 67 envelopes
- 23 envelopes reporting indications
- 44 envelopes blank

Acquisition and Original Conditions



Acquisition and Original Conditions



Acquisition and Original Conditions

Das hote Land
Viner Zagenberg
1917

Alte Lindene
Rob. Harwick
1917

Quilhaus in d.
1000 Rorpa
1917

Weibchen

Wanda Treumann
Viggo Lassen

Das Spiel
ist aus.

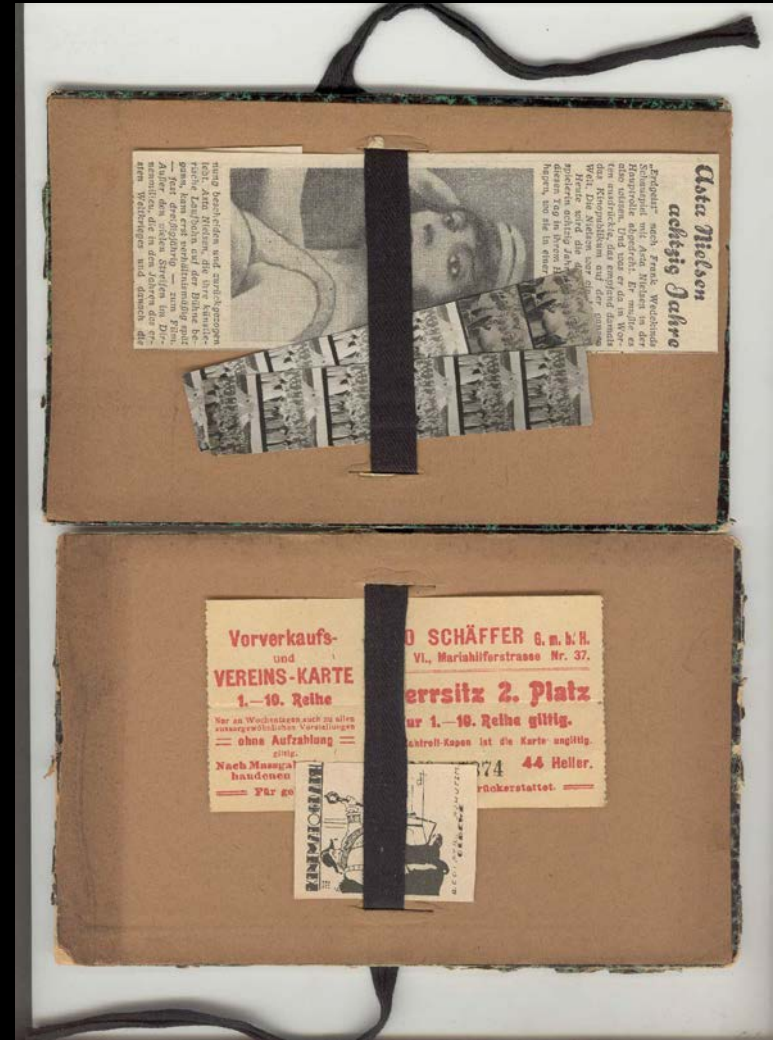
Geschichte
d. deutschen
Volkes

Acquisition and Original Conditions



Acquisition and Original Conditions

- 2254 items
- 2073 items Nitrate Films
- 181 items on safety film base



Country and Period

- Majority of titles between 1912 and 1918
- Some exceptions:
 - *AMOUR A TOUS LES ÉTAGES, L'* (1904)
 - *KING OF KINGS, THE* (1927)
- Titles of the Austrian Distribution
 - *DIE IRRE* for *GRAFIN DE CASTRO*
- War Newsreels of the German Distribution

Reorganization and Archivalization

First Phase

New Archival Sheets

Preserved “original order”

Digitalization of the Items

Second Phase

Creation of Groups

New Denomination

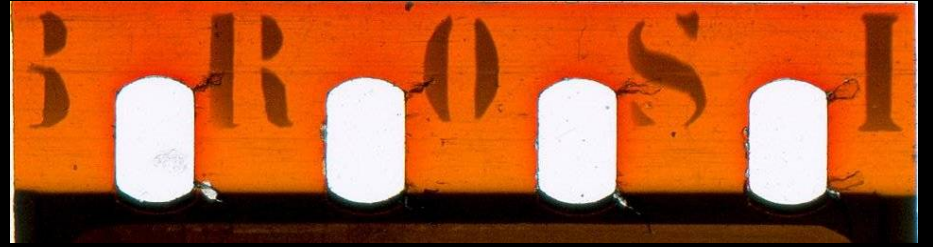
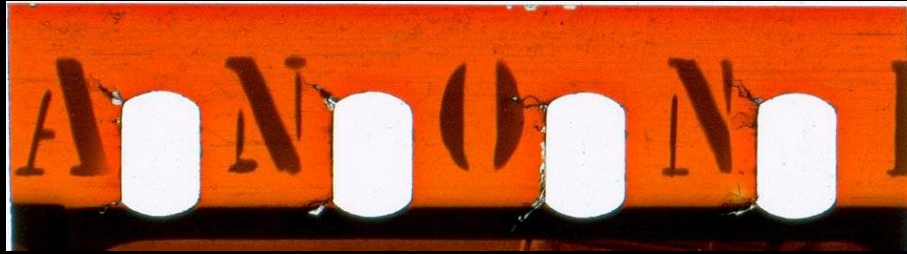
Double Numeric Sequence (ex. 001-01)

Reversibility of Process

Grouping Methods: Paratext

- Edge Marks and Edge Codes
- Perforations
- Damages
- Colourations Quality and Typologies
- Frame and Inter-frame Dimensions

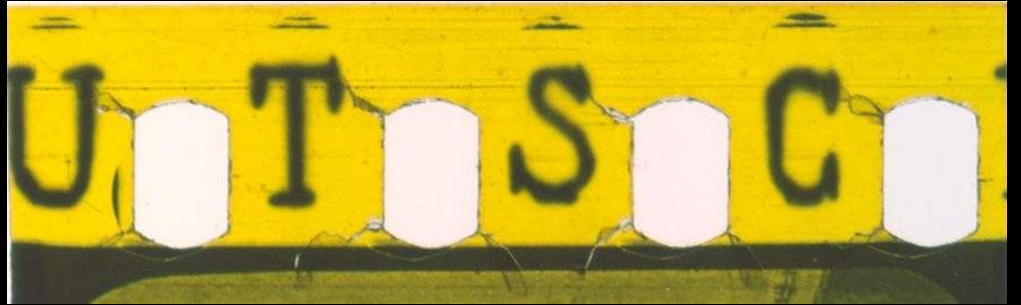
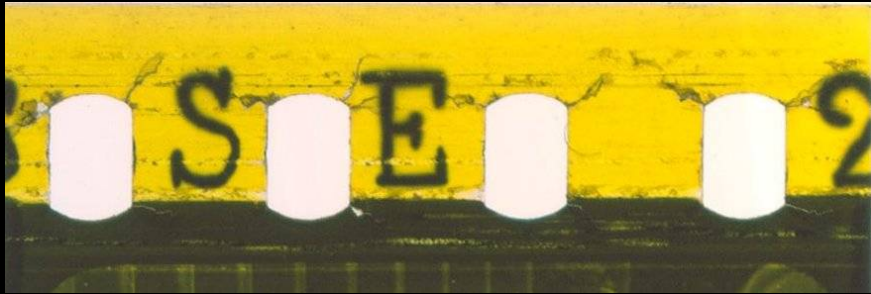
Edge Marks: *Ambrosio*



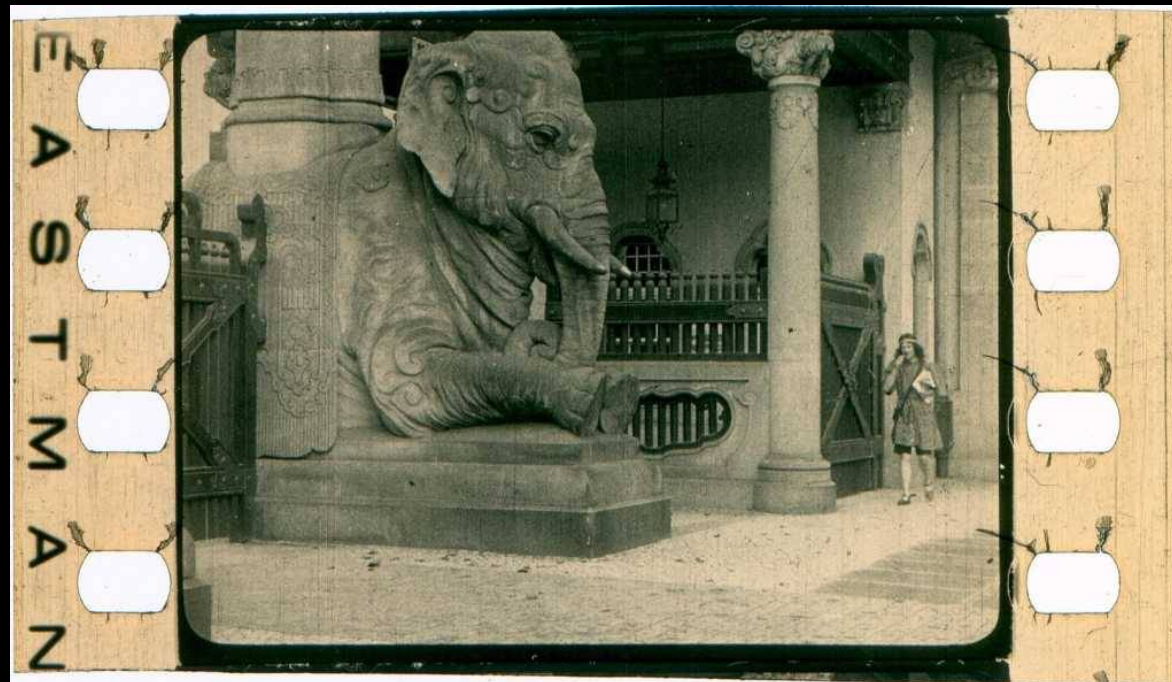
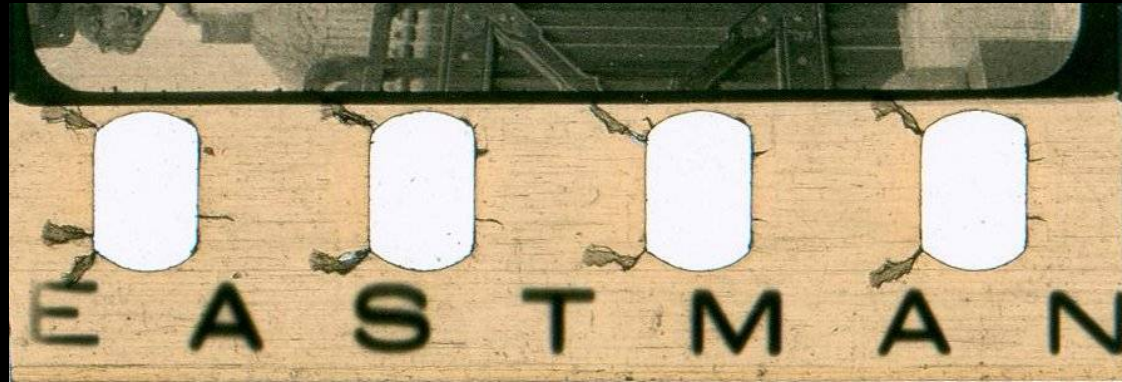
Edge Marks: *Biak* (Pasquali)



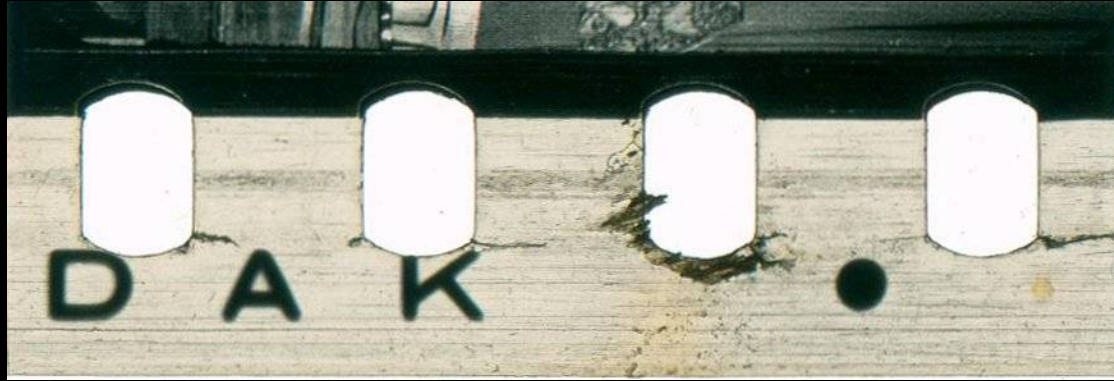
Edge Marks: *Deutsche Bioscop*



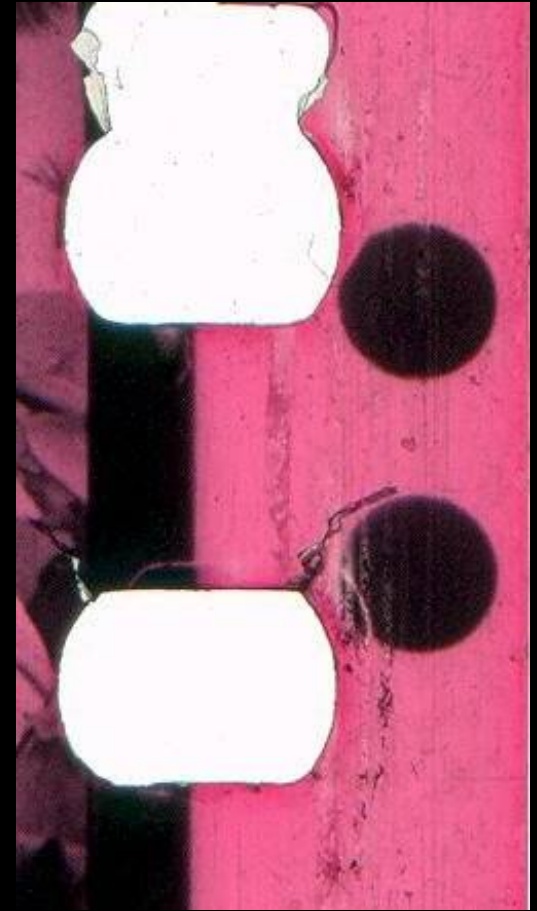
Edge Marks: *Eastman Kodak*



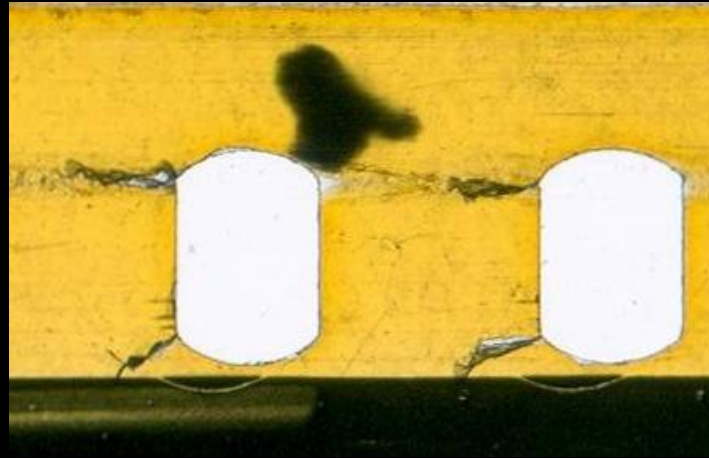
Edge Marks: *Eastman Kodak* (1916)



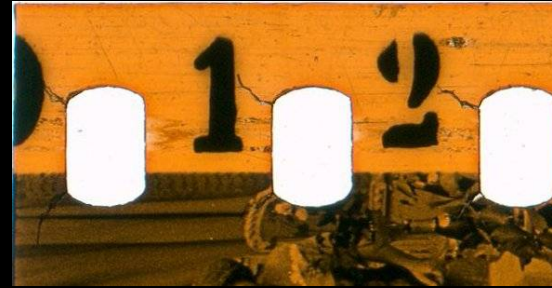
Edge Marks: *Eastman Kodak* (1919)



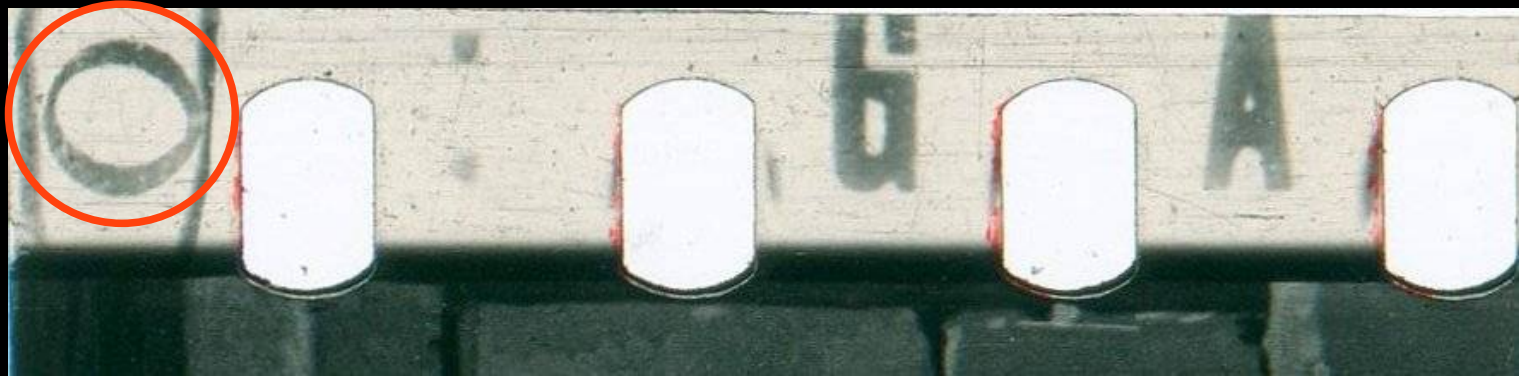
Edge Marks: *Eastman Kodak* (?)



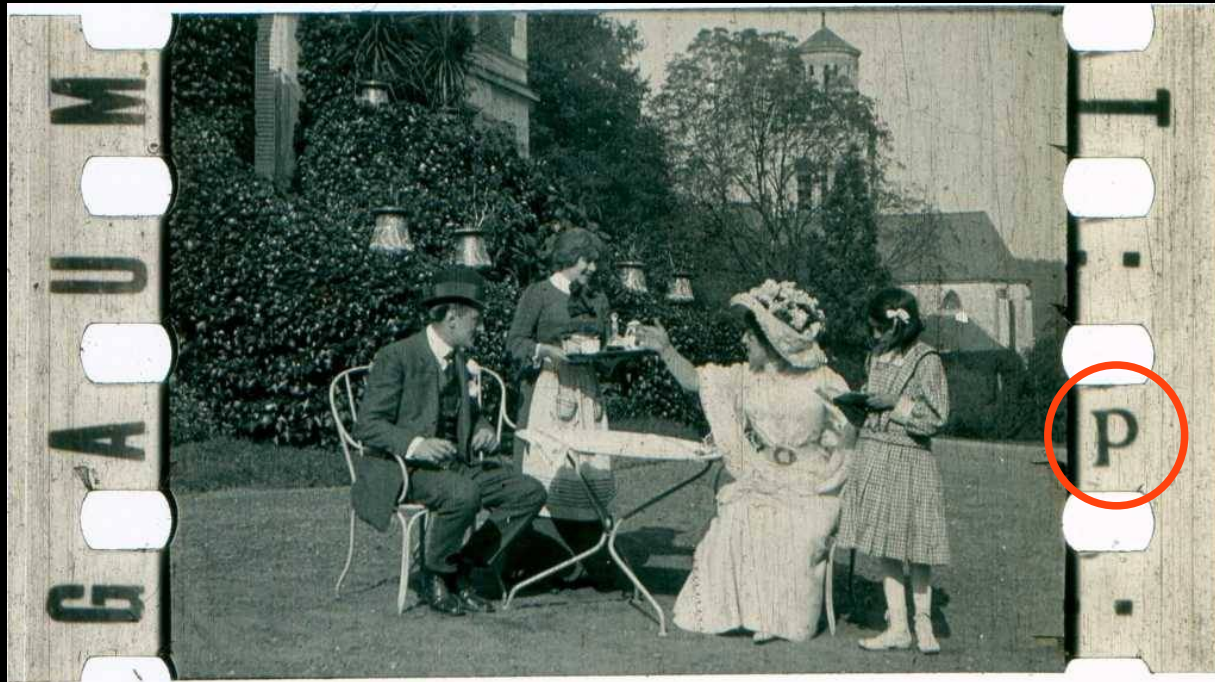
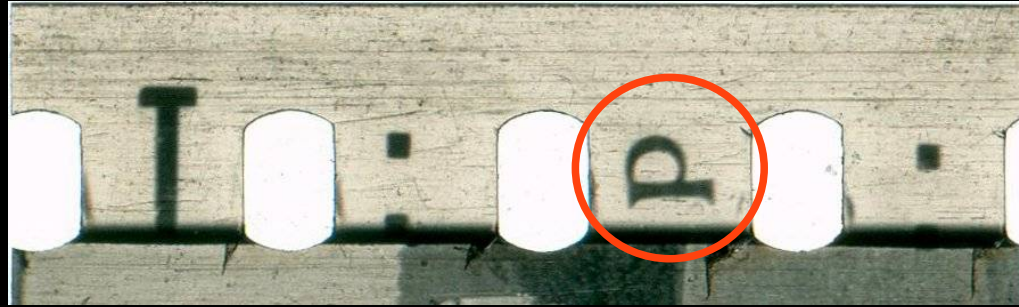
Edge Marks: *Eclair*



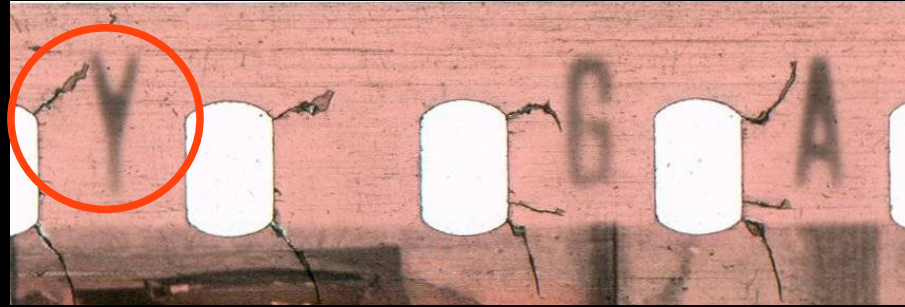
Edge Marks: *Gaumont* (<1909)



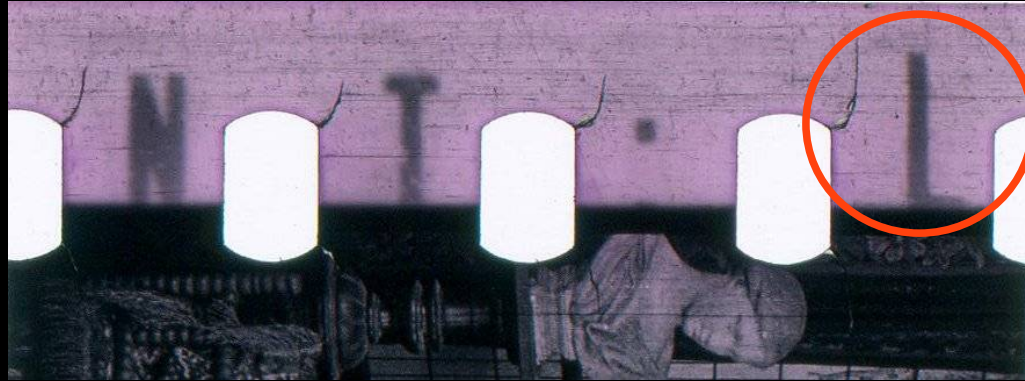
Edge Marks: *Gaumont* (<1909)



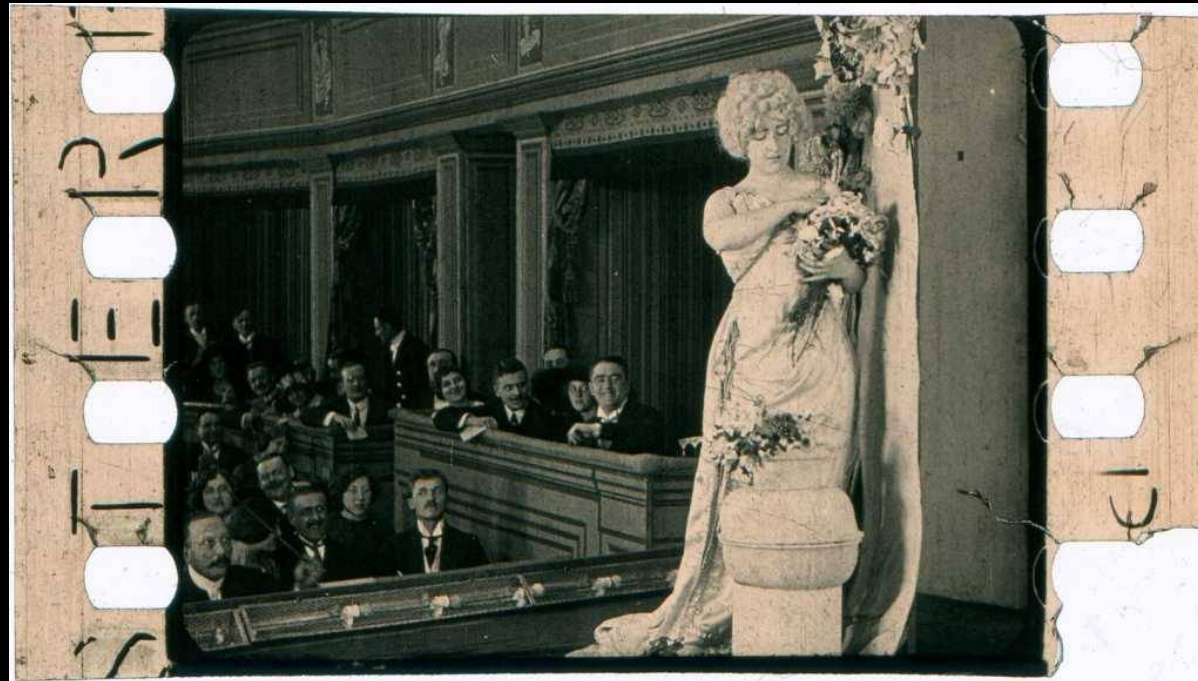
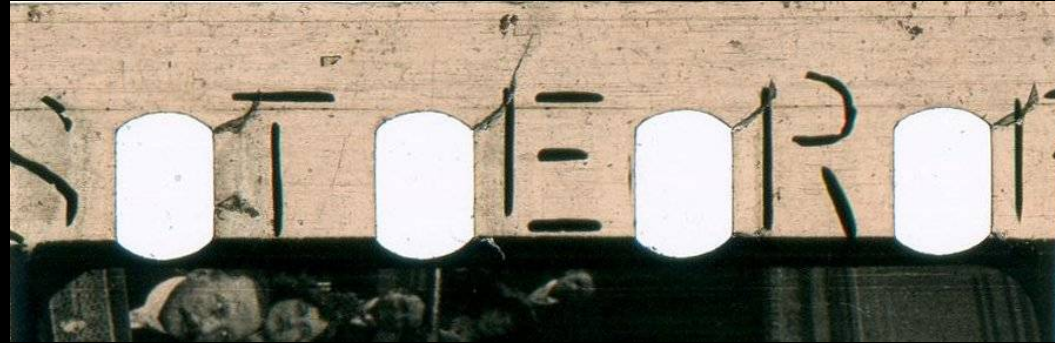
Edge Marks: *Gaumont* (1909)



Edge Marks: *Gaumont* (>1909)



Edge Marks: *Messter*



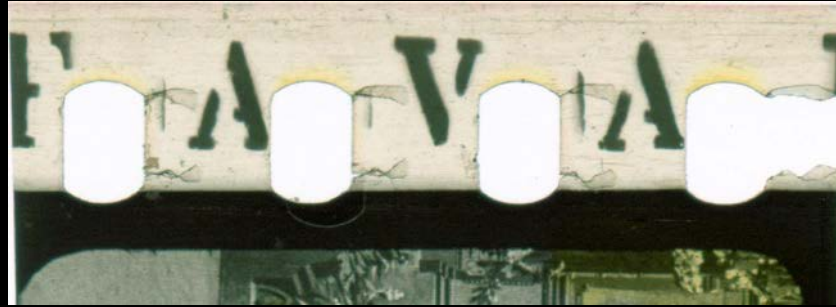
Edge Marks: *Messter*



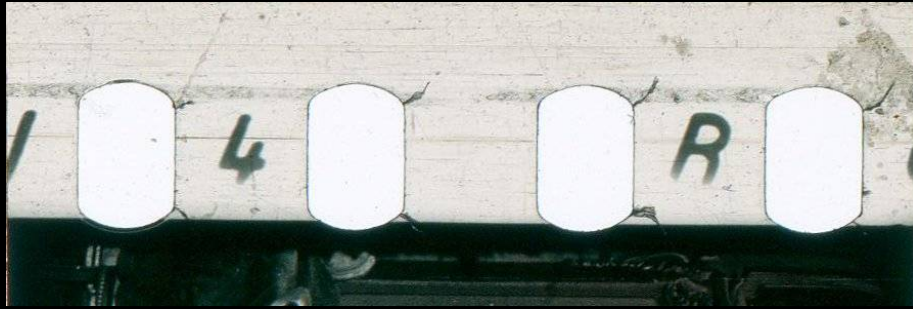
Edge Marks: *Pathé* (Straight)



Edge Marks: *Pathé* (Straight Old)



Edge Marks: *Pathé* (Slope)



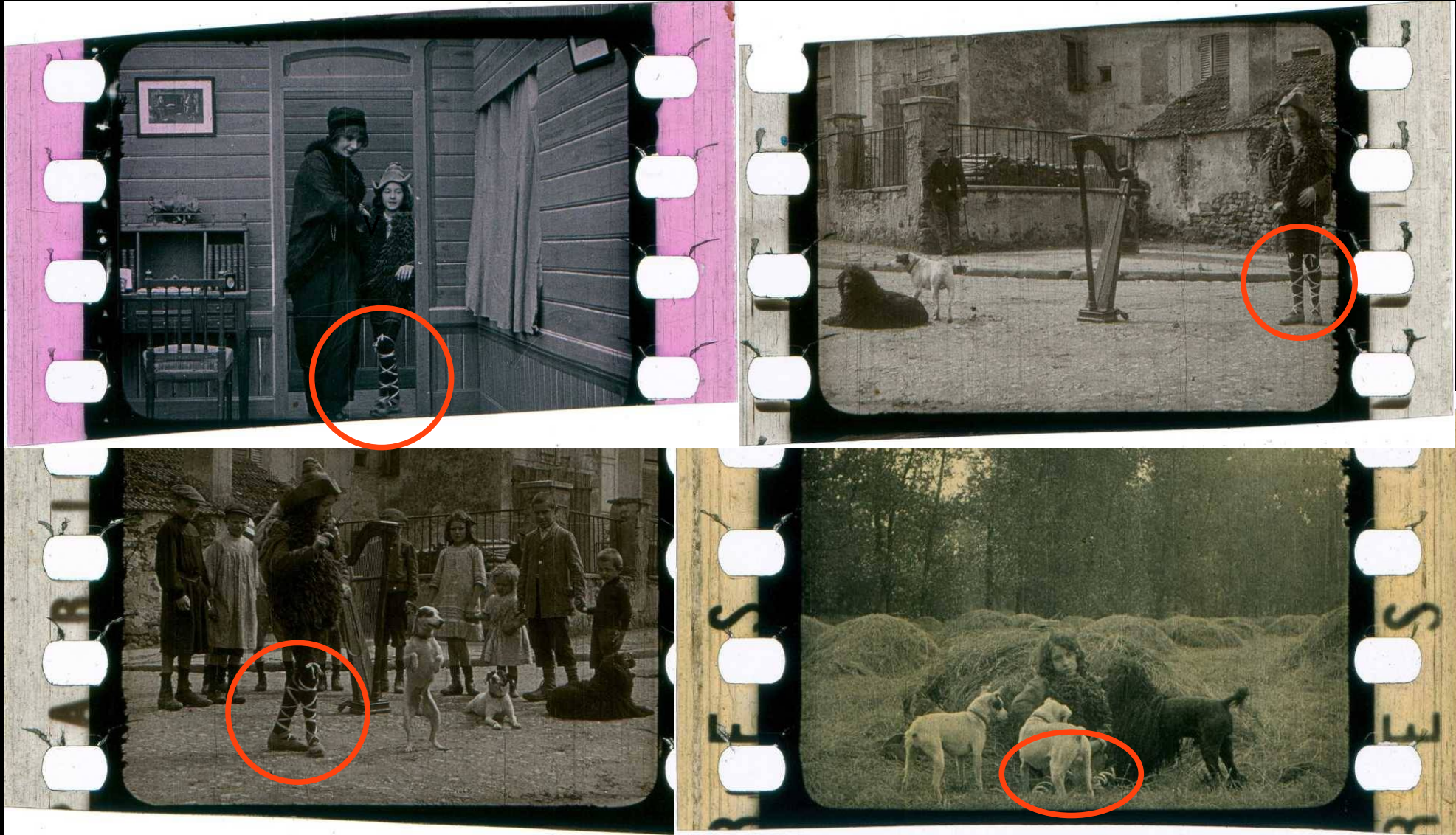
Grouping Methods: Text

- Identical Architectural Characteristics
- Identical Staging Characteristics
- Identical Characters (Same Costume, Make Up and Actor)

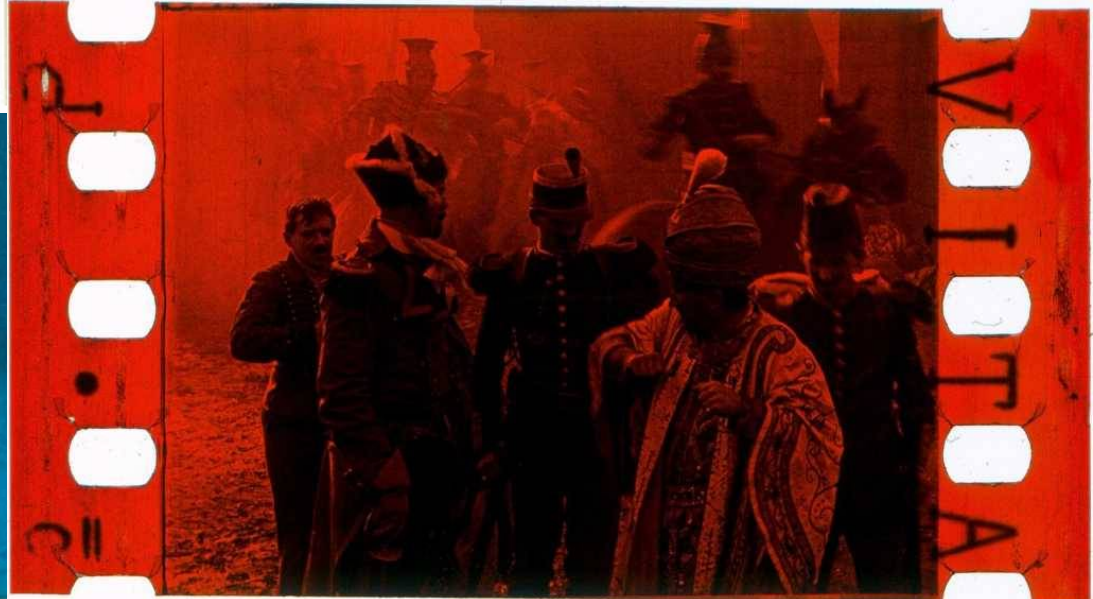
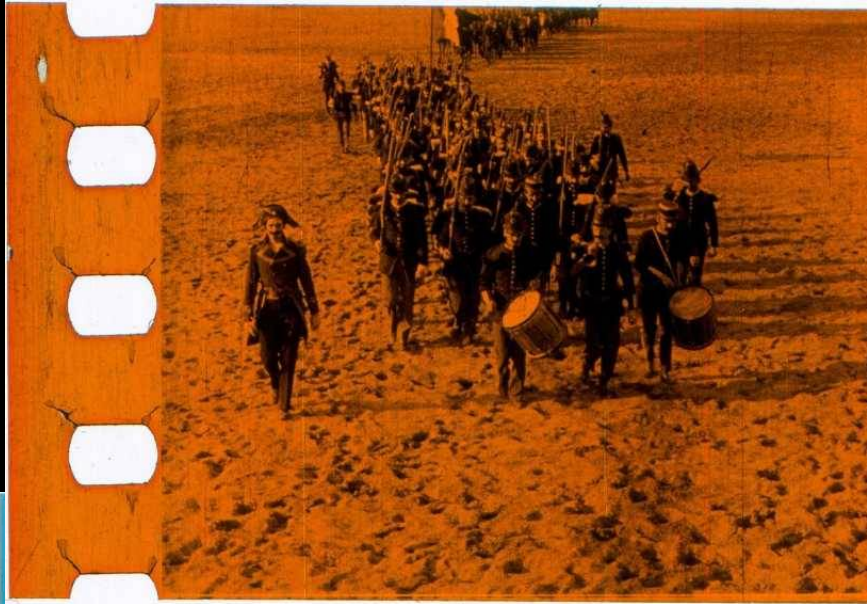
Identical *Mise en Scene*



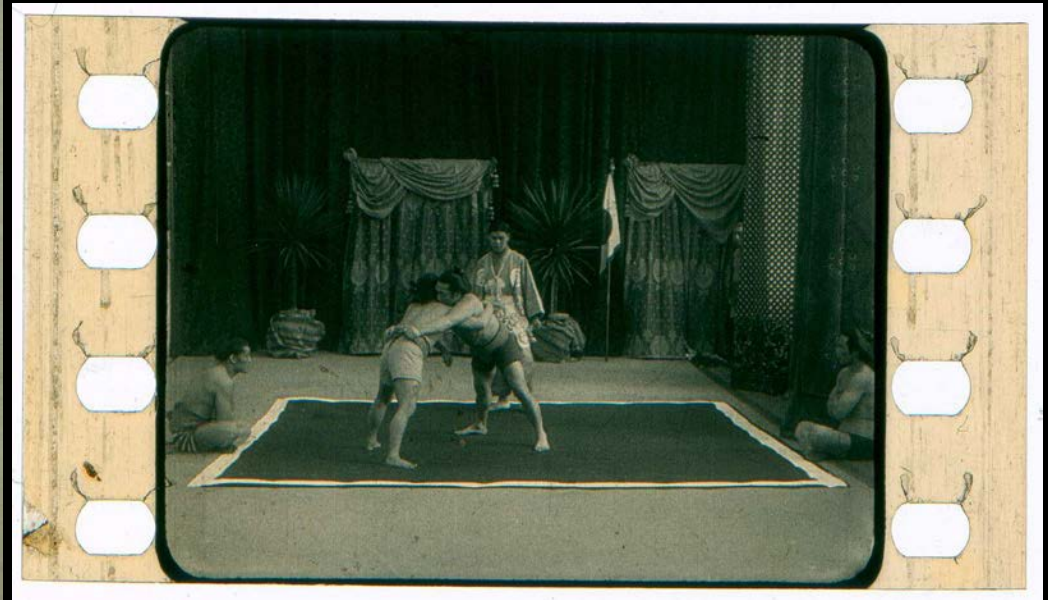
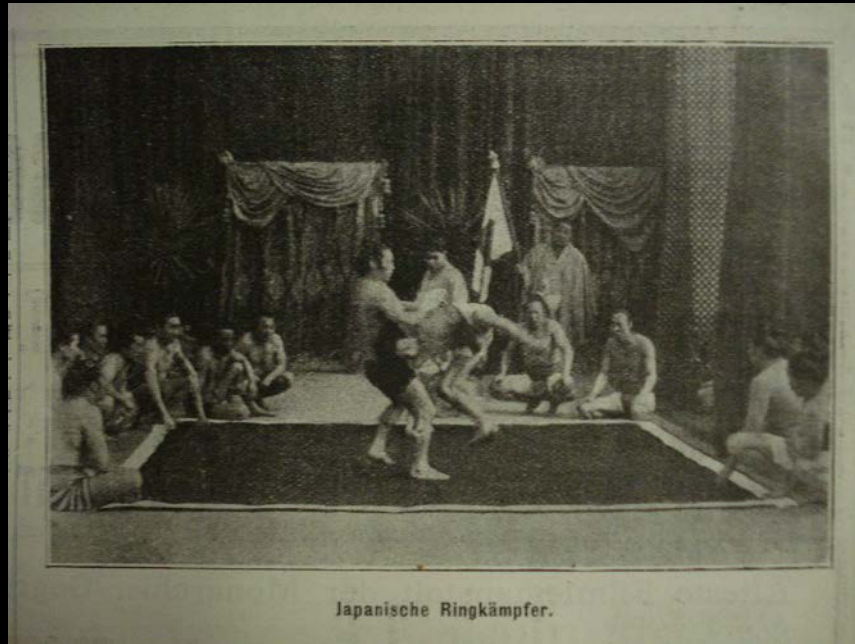
Identical Characters



Identical Characters



Identification



Japanische Ringkämpfe (1911)

Identification



Sans Famille (France, 1913)

Identification



Salambo (Italy, 1915)

Identification



Dame de chez Maxim's (1912)

Identification

ROBERT WARWICK


—Star of "The Dollar Mark," "The Man of the Hour" and "Alias Jimmy Valentine," has an equally good opportunity to show his power of interesting character delineation in this powerful play.

"The Man Who Found Himself"

By George Broadhurst

Which was successfully staged on Broadway under the name of "The Mills of the Gods."

Produced by
Wm. A. Brady
Picture Plays
INCORPORATED
In 5 Acts
Released April 5



EXCHANGES AT

Boston	Cleveland	Denver	St. Louis	Seattle	San Francisco
Buffalo	Cincinnati	Pittsburgh	Los Angeles	Omaha	Salt Lake City
Chicago	Detroit	Indianapolis	Philadelphia	New York	Washington
Atlanta	Dallas	New Orleans	Kansas City	Minneapolis	
Canada—Vancouver	Toronto	Winnipeg	Calgary	Montreal	St. John, N. B.

HOME OFFICE: 130 WEST 46th STREET, NEW YORK CITY

EDELMAN



The Man Who Found Himself (USA, 1915)


Identification

THE MOVING PICTURE WORLD 627

LONDON-PARIS-NEW YORK-BERLIN-VIENNA-BRUSSELS-ROME-MILAN-HAMBURG

PATHÉ

OFFICES IN ALL PRINCIPAL CITIES OF THE WORLD



Scene from "The Marriage of Cupid."

A MEDDLER WITH FATE
TWO PARTS
The Wife in a Moment of Folly Arouses Her Husband's Jealousy, Resenting Her Actions He Takes A Most Unusual Way of Giving Her A Lesson By Which She Profits and Regains Happiness.
RELEASED MAY 7TH

THE MARRIAGE OF CUPID
TWO PARTS
A Famous Mythological Story Worked into A Film of the Most Remarkable Beauty, and Acted by Women of Great Attractiveness and Talent. A Leaf Taken from the Pages of the Immortal Classics.
RELEASED MAY 9TH
INSIST UPON THESE FILMS AT YOUR EXCHANGE. IF YOU CAN'T GET THEM WRITE US AND WE WILL HELP YOU.

AMSTERDAM-MUNICH-ATHENS-ROSSTOFF-SYDNEY-VALGIERSSINGAPORE-SHANGHAI-MANILA-CAIRO-HONGKONG-BRACOU-BOENOS AIRES-MEXICO-RIO-ANEIRO-BARCELONA-BELGRADE-BUCAREST-ZURICH-WARSZAWA-SOFIA-MARSEILLES-BUDAPEST.

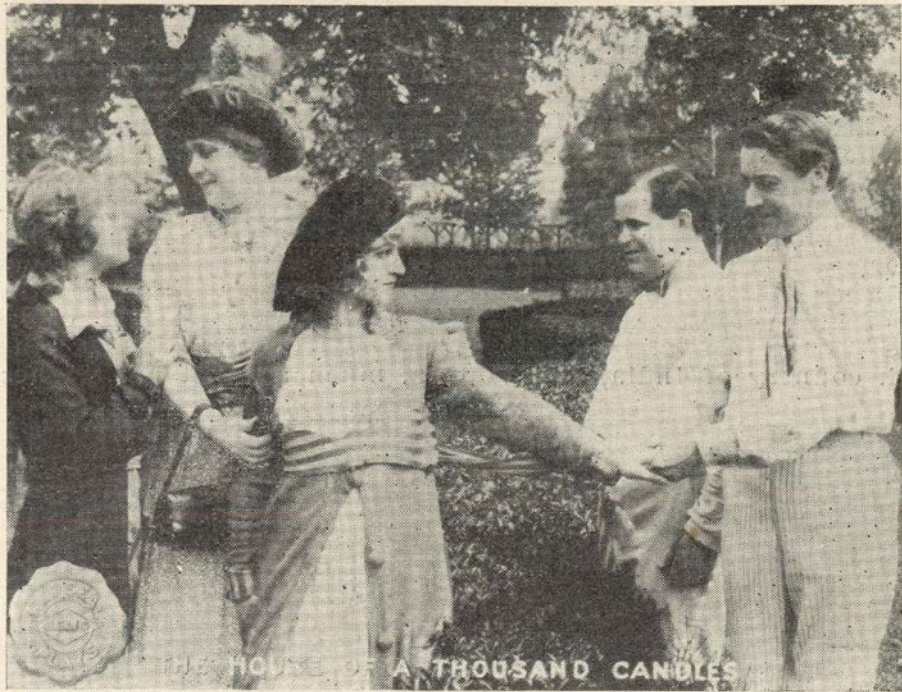
PATHÉ'S WEEKLY
COVERS THE WHOLE WORLD
PATHÉ FRÈRES 1 CONGRESS ST. JERSEY CITY, N.J.

ST PETERSBURG-STOCKHOLM-DRESDEN-MADRID-ODESSA-MOSKOW-KIEW



Le mariage de l'Amour (France, 1913)

Identification



Scene from "The House of a Thousand Candles" (Selig).



The House of a Thousand Candles (USA, 1915)

Identification

isal (understandably, the Bank was
times we linked up with the BNZ's
s at Agricultural & Pastoral Shows
reenings – the local bank manager
at programmes and jaffas. In each
s provided to host a free public
clients and Archive guests.

A scene from *Concours de
Gourmand*, a French Pathé
film of ca. 1905, recovered as
part of the Alan Roberts
Collection.

Alan Roberts Collection, New Zealand Film
Archive, Wellington.



features which we collected only if

Concours de gourmand (France, 1905)

Identification



Une brute humaine (France, 1913)

Identification



La fille de Delft (France, 1913)

Identification

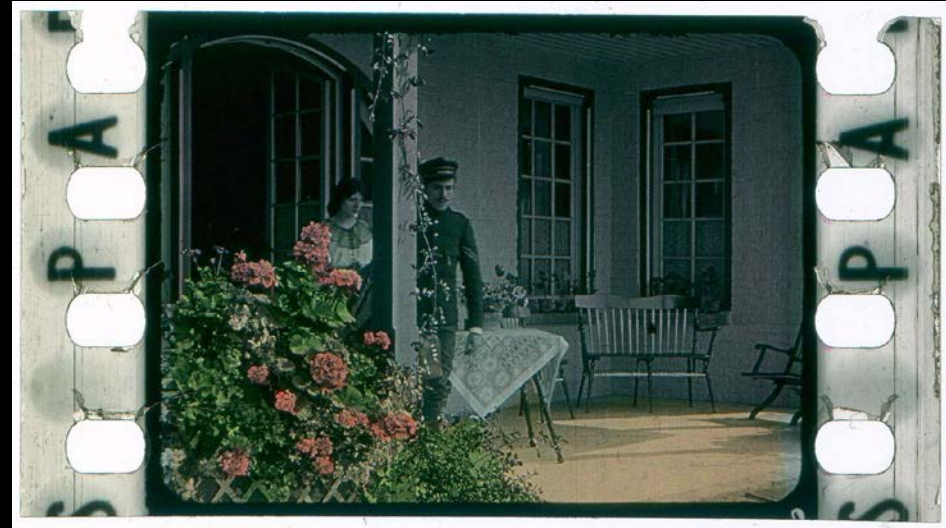


Le Comte est séduit par la grâce d'Hortense.



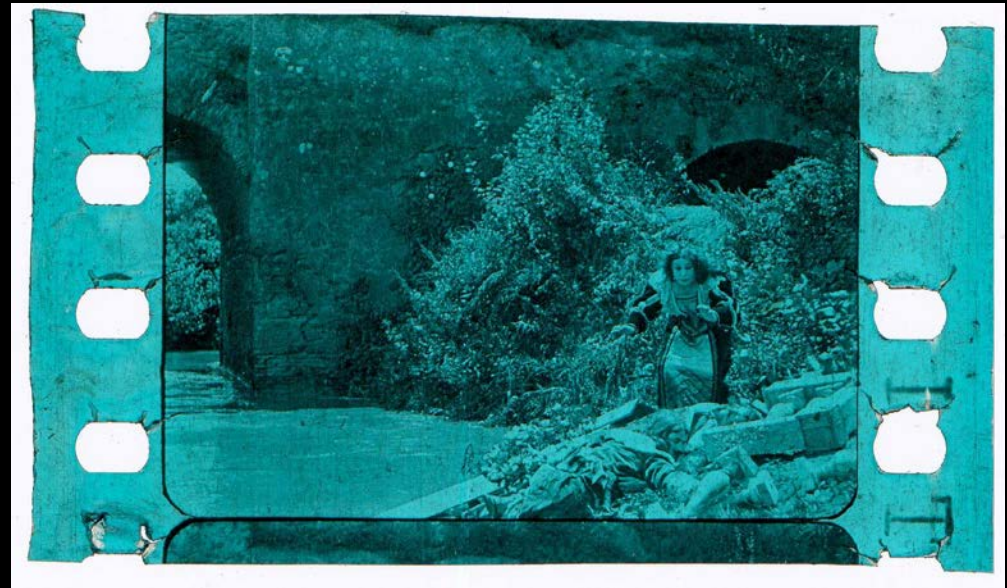
La Bergère d'Ivry (France, 1913)

Identification



Maudit soit la Guerre (Belgium, 1913)

Identification



La Serenata (Italy, 1910)

Use of this and similar collections

- For restoration purposes
 - Color matching
 - Film Stock Analysis
- Multiple versions documentation
- Information on Lost Films
- Visual Database for actors/actresses
- Visual essays